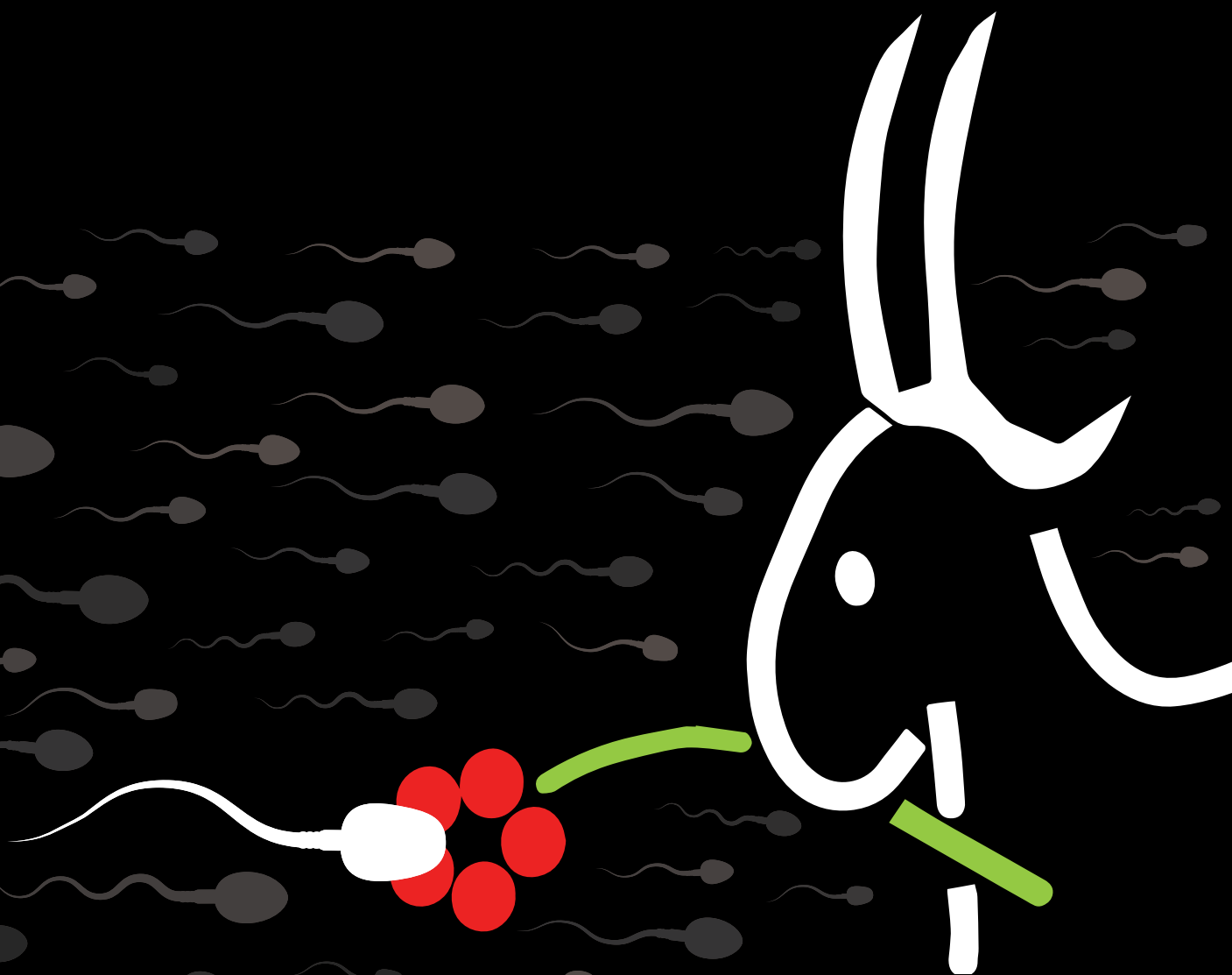


# BEST GOATS

AUSTRIA



**GOAT GENETICS 2019/20**

# Femos

AT 381.715.240



**TBV:** 113  
**FBV:** 90  
**MBV:** 122

**Milk yield**  
life performance

Date of birth: 27.01.2015

Review: 07.09.2018

Breeder: Andreas Feßl, Edlbach

twin

R:8 Fo:7 Fu:7 B:8

hornless

BMC: Ia



|   |                        |                           |  |
|---|------------------------|---------------------------|--|
| <b>F:</b> AT 383.850.830                                      | Fritz                  | <b>FF:</b> DE 620001445   | FELIX  |
| <b>Birth:</b> 16.05.12  | Triplet                | R:8 Fo:9 Fu:9 B:8         | Twin   |
|   | <b>Cat.:</b> A         | <b>TBV:</b> 100           | la   |
| 07/16 R:8 Fo:8 Fu:7 B:8                                       | <b>BMC:</b> la         | <b>Sons:</b> 169/9        | <b>Daughters:</b> 134/29                       |
| <b>TBV:</b> 98 (94) <b>FBV:</b> 91 (83) <b>MBV:</b> 102 (92)  |                        | <b>FM:</b> AT 943.158.410 | 46   |
| <b>BM-milk:</b> +77-0,37-0,3-0,34-0,2                         |                        | R:7 Fo:7 Fu:6 E:5         | Twin   |
|   |                        | <b>TBV:</b> 126           | lla  |
| <b>Sons:</b> 111/6  | <b>Daughters:</b> 90/0 | <b>F:</b> 4.1/4/8/8       | <b>AFB:</b> 367 <b>DBB:</b> 377 <b>TB%:</b> 50 |
| <b>M:</b> AT 386.058.320                                      | 69                     | 4/4                       | 1177-3,33-39,2-2,99-35,2-74,4                  |
| <b>Birth:</b> 13.02.09  | Twin                   | <b>MF:</b> AT 940.969.910 | ERICH  |
|   | Buck-mother            | R:8 Fo:7 Fu:7 B:7         | Triplet  |
| 10/10 R:7 Fo:7 Fu:7 E:7                                       | <b>BMC:</b> lb         | <b>TBV:</b> 100           | lb   |
| <b>F:</b> 7.0/7/12/12   |                        | <b>Sons:</b> 156/2        | <b>Daughters:</b> 200/76                       |
| <b>AFB:</b> 404   | <b>DBB:</b> 307        | <b>MM:</b> AT 943.130.110 | 39   |
| <b>TBV:</b> 116 (92) <b>FBV:</b> 94 (72) <b>MBV:</b> 123 (90) |                        | R:7 Fo:7 Fu:7 E:7         | Twin   |
| <b>BM-milk:</b> +236-0,19+6,0-0,12+6,3                        |                        | <b>TBV:</b> 112           | lb   |
| 7/7 1079-3,04-32,8-2,93-31,6-64,4                             | 236 D.                 | <b>Fr:</b> 4.5/4/7/7      | <b>AFB:</b> 347 <b>DBB:</b> 429 <b>TB%:</b> 75 |
| 3. 1499-3,00-45-2,98-44,7-89,7                                | 240 D.                 | 4/3                       | 901-3,14-28,3-3,17-28,6-56,9                   |

## LACTATIONS:

| number | lactation nr. | milking days | milk kg | fat % | fat kg | protein % | protein kg |
|--------|---------------|--------------|---------|-------|--------|-----------|------------|
| 20     | 1             | 240          | 739     | 3,3   | 24,0   | 3,2       | 23,4       |
| 9      | 2             | 240          | 1016    | 3,1   | 31,3   | 3,0       | 30,7       |

# TOP-GENETICS FROM AUSTRIA

Our bucks offer best breeding quality. Their semen achieves the highest veterinary requirements and provides for efficient offspring.

TBV = total breeding value  
FBV = fitness breeding value  
MBV = milk breeding value

His mother is an exceptional goat. Three of her sons are among the top 40 of the Austrian breeding value estimation. The strengths of this bloodline are the excellent milk quantity and the high inheritance security. Due to the enormous milk quantity, it is important to pay attention to a flat maternal lactation course.

# M.Adema

NL 100052787441



**TBV:** 125

**FBV:** 115

**MBV:** 124

## Milk yield

Milk components, Exterior

Date of birth: 26.01.2012

Review: 10.07.2016

Breeder: Klaas Sjord Meekma, Deinum

twin

R:8 Fo:8 Fu:8 B:8

dehorned

BMC: Ia



**F:** NL 1000052786727

Merilla Sido

**FF:** NL 05295

M. SIL

**Birth:** 10.02.11**Cat.:** V

Twin

**Sons:** 0/0**Daughters:** 0/0**FM:** NL 101643321361

M.Jelly

Twin

**Sons:** 0/2**Daughters:** 0/3

0/3 1569-4,55-71,4-3,72-58,3-129,7

**M:** NL 008093404523

M. Tietje

**MF:** NL BT415

CH. Bronaled

**Birth:** 15.03.06**Cat.:** V**Sons:** 0/0**Daughters:** 0/0**MM:** NL 008093402540

M.Bella

1. 1506-5,01-75,5-3,39-51,1-126,6 305 D.

0/3 1759-5,08-89,4-3,35-59-148,4 305 D.

2. 1933-5,14-99,4-3,31-64-163,4 305 D.

0/2 1490-4,40-65,5-3,43-51,1-116,6

**AT 842.128.940**

AFKKA HELIS

**Birth:** 20.05.15

Singleton

**TBV:** 109 (88) **FBV:** 110 (55) **MBV:** 107 (86)**CC:** 104 **Pers:** 113 **BL:** 99 **RL:** 102**BM-milk:** -13+0,60+4,5+0,29+2,1

2/2 838-3,93-32,9-3,54-29,7-62,6 240 D.

2 972-3,57-34,7-3,58-34,8-69,5 240 D.

**B: Karer Alexander, Jeging****AT 842.234.840**

AFFKKA 267

**Birth:** 03.06.15

Twin

**TBV:** 115 (86) **FBV:** 99 (53) **MBV:** 120 (83)**CC:** 93 **Pers:** 104 **BL:** 100 **RL:** 104**BM-milk:** +109+0,47+8,1+0,22+5,7

2/2 981-3,82-37,5-3,57-35,0-72,5 240 D.

3 1119-3,77-42,2-3,64-40,7-82,9 240 D.

**B: Karer Alexander, Jeging****AT 851.497.640**

AFKKA 274

**Birth:** 20.09.15

Singleton

**TBV:** 110 (86) **FBV:** 110 (54) **MBV:** 108 (84)**CC:** 110 **Pers:** 105 **BL:** 101 **RL:** 104**BM-milk:** -11+0,66+4,8+0,42+3,0

2/2 826-4,08-33,7-3,67-30,3-64,0 240 D.

3 944-4,17-39,4-3,67-34,6-74,0 240 D.

**B: Karer Alexander, Jeging**

## LACTATIONS:

| number | lactation nr. | milking days | milk kg | fat % | fat kg | protein % | protein kg |
|--------|---------------|--------------|---------|-------|--------|-----------|------------|
| 36     | 1             | 242          | 867     | 4,2   | 36,1   | 3,6       | 30,9       |
| 11     | 2             | 248          | 913     | 3,9   | 36,3   | 3,6       | 33,4       |
| 3      | 3             | 240          | 722     | 4,1   | 29,6   | 3,6       | 26,4       |

Adema is a direct descendant of one of the best dutch sire breeding lines. His father Sido has headed the dutch goat breeding system for years. Adema himself is top-seeded in the Austrian genetic evaluation. These genetic endowments stand for superior performance and outstandingly high milk ingredients. Dam Tietje's very high fat values are striking. Adema's daughters impress with high functionality and good udders. The very good milk component values of the daughters are reinforcing the breeding progress.



# Jonas

DE 71.046.563



**TBV:** 110

**FBV:** 102

**MBV:** 113

## Exterior

Udder, milk yield

Date of birth: 30.01.2011

Review: 26.07.2014

Breeder: Werner Sauer, Arnstein

twin

R:9 Fo:9 Fu:8 B:8

horned

BMC: Ia



|   |                              |                           |                                   |
|---|------------------------------|---------------------------|-----------------------------------|
| <b>F:</b> DE 0399884512                                       | Jasper                       | <b>FF:</b> DE 0399653017  | Jaba                              |
|   | <b>Cat.:</b> V               | R:8 F:8                   | la                                |
| R:8 F:8   | <b>ZWKL:</b> la              | <b>Sons:</b> 0/1          | <b>Daughters:</b> 0/0             |
| <b>TBV:</b> 105 (72) <b>FBV:</b> 95 (51) <b>MBV:</b> 108 (53) |                              | <b>FM:</b> DE 039976003   | Amidala                           |
| <b>BM-milk:</b> +53+0,15+3,0+0,09+2,4                         |                              | R:7 Fo:9 Fu:8 E:8         | lb                                |
|   |                              | <b>F:</b> 4-4-9-9         |                                   |
| <b>Sons:</b> 1/3  | <b>Daughters:</b> 5/3        | 0/1                       | 1321-2,73-36,1-2,57-33,9-70,0     |
| <b>M:</b> DE 10359810   | Anelie                       | <b>MF:</b> DE 11620001445 | Felix                             |
| <b>Birth:</b> 01.02.09  | <b>Cat.:</b> A               |                           | Twin                              |
|   | Buck-mother                  | <b>GZW:</b> 100           |                                   |
| R:8 Fo:8 Fu:8 E:8   | <b>BMC:</b> la               | <b>Sons:</b> 2/1          | <b>Daughters:</b> 11/10           |
| <b>F:</b> /1/2/2  |                              | <b>MM:</b> DE MSP023867   | Anneliese                         |
|   | <b>TB%:</b> 100              | R:7 Fo:9 Fu:7 E:9         | lb                                |
| <b>DBB:</b> 98 (37)   |                              | <b>F:</b> 5-5-8-8         | <b>UI:</b> 127                    |
| <b>CC:</b> 107 <b>Pers:</b> 92 <b>BL:</b> 95 <b>RL:</b> 97    |                              |                           | <b>TB%:</b> 100                   |
| 1/2   | 695-3,35-23,3-2,95-20,5-43,8 | 222 D.                    |                                   |
| 1.  | 712-3,40-24,2-3,01-21,4-45,6 | 240 D.                    | 0/1 1270-3,35-42,5-3,03-38,5-81,0 |

## LACTATIONS:

| number | lactation nr. | milking days | milk kg | fat % | fat kg | protein % | protein kg |
|--------|---------------|--------------|---------|-------|--------|-----------|------------|
| 35     | 1             | 234          | 602     | 3,4   | 20,4   | 3,1       | 18,6       |
| 29     | 2             | 236          | 788     | 3,3   | 25,9   | 3,0       | 23,7       |
| 23     | 3             | 240          | 859     | 3,4   | 29,0   | 3,0       | 25,5       |

# GOAT GENETICS FROM AUSTRIA



Example

This German buck impresses with his great exterior. His mother „Anelie“, and his grandmother, are characterized by very good udder qualities. The balance of his breeding values should be a step in the right direction.



# Enrico

AT 790.977.740



**TBV:** 120

**FBV:** 119

**MBV:** 113

## Allrounder

Heritage security

Date of birth: 26.03.2016

Review: 12.07.2017

Breeder: Petra Wohlschlager, Bad Leonfelden

triplet

R:8 Fo:7 Fu:8 B:8

dehorned

BMC: lb



**F:** AT 380.604.120 Eros  
**Birth:** 08.01.10 Singleton **Cat.:** A

08/14 R:8 Fo:8 Fu:7 B:8 **BMC:** Ia

**TBV:** 116 (97) **FBV:** 119 (91) **MBV:** 110 (96)  
**BM-milk:** +101+0,07+3,4-0,10+2,4

**Sons:** 169/4 **Daughters:** 210/47

**M:** AT 880.610.920 Petra  
**Birth:** 14.04.11 Twin **Cat.:** A  
 Buck-mother

08/14 R:8 Fo:7 Fu:7 E:7 **BMC:** Ib  
**F:** 6.8/5/11/10  
**AFB:** 784 **DBB:** 428 **TB%:** 40

**TBV:** 117 (89) **FBV:** 110 (58) **MBV:** 118 (88)  
**BM-milk:** +124+0,17+5,3+0,20+5,6

5/4 815-3,24-26,4-3,26-26,6-53,0 235 D.  
 3. 960-3,46-33,2-3,28-31,5-64,7 240 D.

**FF:** AT 427.058.120 Rudi  
 R:7 Fo:7 Fu:7 B:7 Triplet  
**TBV:** 109 Ila

**Sons:** 29/1 **Daughters:** 73/23

**FM:** AT 100.688.440 44  
 R:8 Fo:8 Fu:8 E:6 Triplet  
 Ib

**F:** 9.0/8/13/13 **AFB:** 431 **DBB:** 410 **TB%:** 13  
 8/8 979-3,41-33,4-3,31-32,4-65,8

**MF:** AT 940.047.310 PHAROS  
 R:8 Fo:8 Fu:8 B:8 Twin  
**TBV:** 102 Ia

**Sons:** 42/0 **Daughters:** 84/44

**MM:** AT 947.021.710 Olindia  
 R:8 Fo:6 Fu:7 E:7 Twin  
 Ib

**F:** 8.7/5/9/9 **AFB:** 635 **DBB:** 635 **TB%:** 80  
 5/4 620-3,00-18,6-2,92-18,1-36,7

## LACTATIONS:

| number | lactation nr. | milking days | milk kg | fat % | fat kg | protein % | protein kg |
|--------|---------------|--------------|---------|-------|--------|-----------|------------|
| 14     | 1             | 240          | 712     | 3,5   | 25,0   | 3,2       | 22,8       |

## HIGHEST VETERINARY STANDARDS BEST PERFORMANCE | PRODUCTIVE

Both the longtime experience of our breeders and the certificated performance data of our goats contribute to the genetic evaluation.

Hence our Austrian breeding goats are high-performing, very fertile and of certified descent.

Enrico is the new star in the goat-breeding-world. He impresses with balanced partial breeding values. Both parents convince with high inheritance security.



# Pupal

AT 375.585.340



**TBV:** 103

**FBV:** 111

**MBV:** 98

## Exterior

Udder, fitness

Date of birth: 20.01.2015

Review: 10.07.2016

Breeder: Karin und Franz Prüller, Ternberg

twin

R:7 Fo:8 Fu:7 B:8

dehorned

BMC: Ia



|                          |                                |                           |                                |
|--------------------------|--------------------------------|---------------------------|--------------------------------|
| <b>F:</b> AT 881.731.820 | PASCHA                         | <b>FF:</b> DE 71009287    | Patros Rogge                   |
| <b>Birth:</b> 17.03.11   | Twin                           | <b>Cat.:</b> A            | Triplet                        |
|                          |                                | R:8 Fo:8 Fu:8 B:7         |                                |
| 07/12 R:8 Fo:7 Fu:6 B:7  | <b>BMC:</b> lb                 | <b>Sons:</b> 301/28       | <b>Daughters:</b> 280/118      |
|                          |                                | <b>FM:</b> AT 383.378.210 | Rosi                           |
|                          |                                | R:7 Fo:7 Fu:7 E:6         | Twin lb                        |
|                          |                                | <b>F:</b> 8.8/8/15/15     | <b>UI:</b> 106                 |
|                          |                                | <b>AFB:</b> 371           | <b>DBB:</b> 408 <b>TB%:</b> 88 |
| <b>Sons:</b> 65/6        | <b>Daughters:</b> 59/0         | 8/8                       | 883-3,06-27-3,05-26,9-53,9     |
| <b>M:</b> AT 396.717.220 | Horex                          | <b>MF:</b> AT 947.324.410 | Gandalf                        |
| <b>Birth:</b> 26.01.11   | Triplet                        | <b>Cat.:</b> A            | Twin                           |
|                          | Buck-mother                    | R:7 Fo:7 Fu:7 B:7         | lb                             |
| 07/16 R:9 Fo:8 Fu:8 E:7  | <b>BMC:</b> la                 | <b>Sons:</b> 42/0         | <b>Daughters:</b> 40/16        |
| <b>F:</b> 5.0/5/9/9      | <b>UI:</b> 124                 | <b>MM:</b> AT 109.997.840 | Halla                          |
| <b>AFB:</b> 414          | <b>DBB:</b> 353 <b>TB%:</b> 40 | R:8 Fo:8 Fu:7 E:7         | Twin la                        |
|                          |                                | <b>F:</b> 9.0/9/25/23     | <b>UI:</b> 154                 |
|                          |                                | <b>AFB:</b> 403           | <b>DBB:</b> 359 <b>TB%:</b> 44 |
| 5/4                      | 990-3,58-35,4-2,93-29-64,4     | 240 D.                    |                                |
| 2.                       | 1131-3,40-38,4-2,81-31,8-70,2  | 240 D.                    |                                |
|                          |                                | 9/7                       | 740-4,30-31,8-3,27-24,2-56,0   |

## LACTATIONS:

| number | lactation nr. | milking days | milk kg | fat % | fat kg | protein % | protein kg |
|--------|---------------|--------------|---------|-------|--------|-----------|------------|
| 22     | 1             | 232          | 719     | 3,7   | 26,5   | 3,3       | 23,6       |
| 1      | 2             | 240          | 1005    | 3,9   | 39,2   | 3,3       | 33,1       |



|  |   |
|--|---|
| <b>AT 381.782.230</b>                                  | Bregenz   |
| <b>Birth:</b> 25.02.12                                 | Triplet   |
| <b>TBV:</b> 124 (88)                                   | <b>FBV:</b> 122 (60) <b>MBV:</b> 119 (88)                     |
| <b>CC:</b> 118   | <b>Pers:</b> 111 <b>DBB:</b> 95 <b>BL:</b> 117 <b>RL:</b> 113 |
| <b>BM-milk:</b> +127+0,23+6,4+0,19+5,7                 |   |
| 3/3  | 996-3,66-36,5-3,29-32,8-69,3 240 D.                           |
| 3  | 1179-3,81-44,9-3,28-38,7-83,6 240 D.                          |
| <b>B: Lindbichler Elisabeth und Hubert, Roßleithen</b> |   |

Bregenz - One of the most highly categorized in the total market value Patros Rogge daughter with excellent udder qualities.

Pupal is a son of Pascha out of the Patros-Rogge-line – one of the longest time-tested Austrian buck line. Rosi, the sire's mother, showed very continuous lifetime performance and exceptional fitness. Despite his youth, Pupal captivates by a distinctive exterior and dry foundation. His mother Horex is a very productive and correct Gandalf-daughter. This genetic line's advantages are the very good staple feed conversion and the superior functionality. The combination of these sire- and dam-line provide for the future.



# Andi

AT 383.500.430



**TBV:** 110

**FBV:** 97

**MBV:** 114

## Life performance

Fitness, udder

Date of birth: 17.03.2012

Review: 11.07.2017

Breeder: Clemens & Christine Braunreiter, Klaus

quadruplet

R:7 Fo:8 Fu:8 B:8

dehorned

BMC: Ia



|  |                                |                           |  |
|--|--------------------------------|---------------------------|--|
| <b>F:</b> AT 656.061.810                                     | AMOR                           | <b>FF:</b> CH 1196035     | SANDRO   |
| <b>Birth:</b> 03.11.06                                       | Triplet                        | <b>Cat.:</b> A            | T:6 G:6  |
| 05/08 R:8 Fo:8 Fu:8 B:8                                      | <b>BMC:</b> la                 | <b>Sons:</b> 3/6          | <b>Daughters:</b> 0/3                          |
| 1xIA   |                                | <b>VM:</b> CH 1106523     | Angela   |
| <b>TBV:</b> 98 (98) <b>FBV:</b> 88 (95) <b>MBV:</b> 105 (97) |                                | T:6 G:6 E:5 Z:4           |  |
| <b>BM-milk:</b> +63-0,16+0,7-0,13+1,0                        |                                | <b>F:</b> 5.6/5/9/9       | <b>AFB:</b> 330 <b>DBB:</b> 426 <b>TB%:</b> 40 |
| <b>Sons:</b> 137/16  | <b>Daughters:</b> 219/115      | 5/1                       | 1767-3,50-61,8-3,10-54,8-116,6                 |
| <b>M:</b> AT 129.557.110                                     | Olivia 1                       | <b>MV:</b> AT 109.532.540 | Oskar  |
| <b>Birth:</b> 30.05.06                                       | Twin                           | <b>Cat.:</b> A            | R:7 Fo:7 Fu:7 B:6 Singleton Ila                |
|  | Buck-mother                    | <b>TBV:</b> 105           |  |
| 07/12 R:7 Fo:8 Fu:7 E:8                                      | <b>BMC:</b> la                 | <b>Sons:</b> 135/1        | <b>Daughters:</b> 176/104                      |
| <b>F:</b> 8.9/6/13/12  | <b>UI:</b> 148                 | <b>MM:</b> AT 2.364.164   | Orphea   |
| <b>AFB:</b> 411  | <b>DBB:</b> 564 <b>TB%:</b> 67 | R:7 Fo:9 Fu:7 E:9         | Twin Ib  |
| <b>TBV:</b> 99 (92) <b>FBV:</b> 107 (71) <b>MBV:</b> 95 (90) |                                | <b>TBV:</b> 113           | <b>UI:</b> 127                                 |
| <b>BM-milk:</b> -43-0,03-1,7+0,09-0,9                        |                                | <b>F:</b> 6.2/6/10/10     | <b>AFB:</b> 476 <b>DBB:</b> 410 <b>TB%:</b> 71 |
| 6/5 831-3,38-28,1-3,02-25,1-53,2                             | 238 D.                         | 7/6                       | 1086-2,89-31,4-2,97-32,2-63,6                  |
| 4. 958-3,61-34,6-2,90-27,8-62,4                              | 232 D.                         |                           |  |

## LACTATIONS:

| number | lactation nr. | milking days | milk kg | fat % | fat kg | protein % | protein kg |
|--------|---------------|--------------|---------|-------|--------|-----------|------------|
| 46     | 1             | 236          | 734     | 3,4   | 25,1   | 3,1       | 22,4       |
| 59     | 2             | 240          | 1017    | 3,2   | 32,4   | 3,0       | 30,2       |
| 19     | 3             | 239          | 992     | 3,3   | 32,4   | 2,9       | 29,2       |

# GOAT GENETICS FROM AUSTRIA



Example

Andi is a Buck bred from Swiss paternal bloodlines. His father „Amor“ has a very good reliability in his breeding values and he is also a guarantee for high milk performance. His mother Olivia impresses by her balance and exceptional udder quality.



# Saverio

AT 584.518.230



**TBV:** 107  
**FBV:** 103  
**MBV:** 107

## Udder

Exterior, Life performance

Date of birth: 01.02.2012

Review: 02.07.2013

Breeder: Manuela Fink, Uttendorf

triplet

R:9 Fo:8 Fu:8 B:8

dehorned

BMC: Ia

**F:** DE 10343793  
**Birth:** 15.02.10

H-STANLEY  
**Cat.:** A

R:9 F:8  
 1xIA

**Sons:** 27/7 **Daughters:** 22/3

**M:** AT 142.241.510 Amone  
**Birth:** 13.10.05 Quadruplet **Cat.:** A  
 Buck-mother

07/09 R:8 Fo:8 Fu:7 E:8 **BMC:** la  
**F:** 9.2/9/23/23 **UI:** 157  
**AFB:** 476 **DBB:** 363 **TB%:** 44

1. 926-2,94-27,2-2,62-24,3-51,5 234 D.  
 9/8 1102-2,90-32-2,72-30-62,0 229 D.  
 4. 1394-2,93-40,9-2,73-38-78,9 240 D.

**FF:** DE 10200203 H-Steffen Zw  
 R:9 F:9

**Sons:** 0/1 **Daughters:** 0/0

**FM:** DE 10008356 H-Marie Zw+  
 R:8 F:8 E9  
**F:** 3,9-3-5-5

0/1 906-3,50-31,7-3,36-30,4-62,1

**MV:** DE D254 Rinaldo  
 R:8 F:8 Z I

**Sons:** 25/13 **Daughters:** 25/12

**MM:** AT 100.643.940 Annuschka  
 R:7 Fo:7 Fu:7 E:8 Z IB  
**F:** 10.8/11/23/22 **UI:** 128  
**AFB:** 376 **DBB:** 356 **TB%:** 64

11/10 1066-3,11-33,2-2,81-30-63,2



**AT 766.680.630** Amira  
**Birth:** 17.02.13 Triplet  
 BM

**TBV:** 109 (90) **FBV:** 110 (62) **MBV:** 106 (88)  
**CC:** 115 **Pers:** 99 **BL:** 107 **RL:** 103  
**BM-milk:** +54+0,34+4,2-0,22+0,0  
 4/3 886-3,53-31,3-2,93-26,0-57,3 240 D.  
 3 1117-3,51-39,2-2,78-31,3-70,3 240 D.  
**B: Wiesinger Klaus, Hirschbach**



**AT 766.682.830** Arina  
**Birth:** 17.02.13 Triplet  
 BM

**TBV:** 110 (89) **FBV:** 113 (58) **MBV:** 105 (87)  
**CC:** 119 **Pers:** 99 **BL:** 107 **RL:** 105  
**BM-milk:** +36+0,18+2,6-0,02+1,1  
 4/3 900-3,46-31,1-3,13-28,2-59,3 240 D.  
 3 1002-3,69-37,0-3,07-30,8-67,8 240 D.  
**B: Wiesinger Klaus, Hirschbach**



**AT 766.719.230** Ricki  
**Birth:** 26.02.13 Singleton  
 BM

**TBV:** 123 (89) **FBV:** 109 (57) **MBV:** 125 (88)  
**CC:** 112 **Pers:** 106 **BL:** 97 **RL:** 96  
**BM-milk:** +189+0,39+9,5+0,00+6,0  
 5/4 1003-3,68-36,9-3,19-32,0-68,9 240 D.  
 3 1142-3,89-44,4-3,20-36,6-81,0 240 D.  
**B: Wiesinger Klaus, Hirschbach**

## LACTATIONS:

| number | lactation nr. | milking days | milk kg | fat % | fat kg | protein % | protein kg |
|--------|---------------|--------------|---------|-------|--------|-----------|------------|
| 128    | 1             | 238          | 642     | 3,6   | 23,1   | 3,2       | 20,7       |
| 96     | 2             | 239          | 812     | 3,6   | 29,4   | 3,1       | 25,4       |
| 62     | 3             | 240          | 946     | 3,7   | 34,6   | 3,1       | 29,3       |

Every breeder will rejoice in Saverio's daughters. As son of Stanley he's of best genetic decent. His sire's mother impressed with both highest udder quality and good milk components. Saverio's dam Amone and her mother Annuschka are one of the best dam-lines in Austria due to their superior udder quality and high lifetime performance of over 10.000 liters. Saverios daughters have a balanced exterior, udder and type with good milk components and therefore stand above the genetic average.



# Saverio



AT 766.765.830



AT 766.693.230



**AT 766.765.830** Esta  
**Birth:** 25.04.13 Triplet  
 BM

**TBV:** 114 (90) **FBV:** 100 (63) **MBV:** 119 (89)  
**CC:** 97 **Pers:** 103 **BL:** 101 **RL:** 100  
**BM-milk:** -161+0,18+6,6-0,09+4,3  
 5/4 1117-3,44-38,4-3,04-34,0-72,4 240 D.  
 3 1336-3,62-48,4-3,04-40,6-89,0 240 D.  
**B: Wiesinger Klaus, Hirschbach**



**AT 766.767.130** Eva  
**Birth:** 25.04.13 Triplet  
 BM

**TBV:** 111 (89) **FBV:** 105 (58) **MBV:** 112 (87)  
**CC:** 109 **Pers:** 104 **BL:** 95 **RL:** 91  
**BM-milk:** +80+0,46+6,2+0,05-2,2  
 3/3 889-3,81-33,9-3,14-27,9-61,8 240 D.  
 3 1052-3,93-41,3-3,12-32,8-74,1 240 D.  
**B: Wiesinger Klaus, Hirschbach**



**AT 766.693.230** Safra  
**Birth:** 19.02.13 Twin  
 BM

**TBV:** 104 (90) **FBV:** 109 (61) **MBV:** 100 (88)  
**CC:** 114 **Pers:** 101 **BL:** 103 **RL:** 95  
**BM-milk:** -46+0,51+2,0-0,20+0,1  
 4/4 840-4,00-33,6-3,39-28,5-62,1 240 D.  
 3 1040-2,24-44,1-3,38-35,1-79,2 240 D.  
**B: Wiesinger Klaus, Hirschbach**





TBV total breeding value  
FBV fitness breeding value  
MBV milk breeding value

BMC breeding merit class  
F father  
FF father-father  
FM father-mother  
M mother  
MM mother-mother  
Fo form/type  
E exterior/type traits  
F fertility

AFB age at first birthing  
DBB days between birthing  
TB percentage of twin-birth  
UI upbringing index  
CC cell count  
Pers persistency  
BL born lambs  
RL reared lambs  
Cat. Category



# Jannsen

AT 764.939.430



**TBV:** 109

**FBV:** 95

**MBV:** 113

## Exterior

Udder, milk yield

Date of birth: 15.09.2012

Review: 27.07.2013

Breeder: Alexander Karer, Jeging

twin

R:8 Fo:7 Fu:8 B:7

dehorned

BMC: Ia

**F:** CH 1201999 JLDO  
**Birth:** 07.04.06 **Cat.:** A

11/11 R:9 Fo:9 Fu:8 B:8 **BMC:** la  
 4xIA  
**TBV:** 100 (97) **FBV:** 89 (91) **MBV:** 106 (96)  
**BM-milk:** +66-0,06+1,4-0,02+1,8

**Sons:** 244/5 **Daughters:** 295/26

**M:** AT 943.729.510 98  
**Birth:** 06.04.08 Twin **Cat.:** A  
 Buck-mother  
 11/11 R:8 Fo:8 Fu:8 E:8 **BMC:** la  
**F:** 7.2/6/10/10  
**AFB:** 329 **DBB:** 461 **TB%:** 67  
 1xIA  
**TBV:** 117 (90) **FBV:** 99 (61) **MBV:** 122 (89)  
**BM-milk:** +271-0,45+4,5-0,33+5,3  
 6/5 1186-2,89-34,3-2,82-33,5-67,8 240 D.  
 3. 1527-3,18-48,5-2,86-43,7-92,2 240 D.

**FF:** CH 1229627 Eiger  
 RM:6 T:6 G:5 Singleton

**Sons:** 0/1 **Daughters:** 0/3

**FM:** CH 1248872BU Hilde  
 T:6 G:6 E:5 Z:6  
**F:** 4.9/5/12/12 **AFB:** 387 **DBB:** 347 **TB%:** 60  
 5/5 1260-3,05-38,4-2,94-37-75,4

**MF:** CH 1461381 LARS  
 R:7 Fo:7 Fu:7 B:7 Twin Ila  
**GZW:** 99

**Sons:** 30/0 **Daughters:** 64/31

**MM:** 107.691.440  
 R:8 Fo:8 Fu:6 E:5 Twin Ila  
**F:** 5.7/6/7/5 **AFB:** 937 **DBB:** 378 **TB%:** 25  
 4/3 983-3,47-34,1-3,03-29,8-63,9

## LACTATIONS:

| number | lactation nr. | milking days | milk kg | fat % | fat kg | protein % | protein kg |
|--------|---------------|--------------|---------|-------|--------|-----------|------------|
| 8      | 1             | 231          | 654     | 3,3   | 21,9   | 3,2       | 21,2       |
| 5      | 2             | 240          | 885     | 3,4   | 30,3   | 3,3       | 29,6       |
| 1      | 3             | 220          | 752     | 3,3   | 24,7   | 3,4       | 25,4       |

## KEY DATA OF GOAT BREEDING in Austria (2018):

Goat population: 77.000  
 Breeding goat population: 17.500  
 Goats with official milk performance monitoring: 9.200

Swiss blood flows in his veins. Jansen is a Buck which impresses with a good maternal and paternal life performance and also by very good udder qualities. His genetics are suitable for improving the milk quantity, by average ingredients.



# M.Farwest

NL 100149942508



**TBV:** 120

**FBV:** 119

**MBV:** 116

## Milk components

Udder, milk yield

Date of birth: 06.04.2013

Review: 10.07.2016

Breeder: Klaas Sjord Meekma, Deinum

twin

R:8 Fo:8 Fu:7 B:8

dehorned

BMC: Ia

**F:** NL 1000052887479

M. Frost

**Birth:** 29.01.12

**Cat.:** V

**FF:** NL 1000052786727

Merilla Sido

**Sons:** 0/2

**Daughters:** 0/3

**VM:** NL 109996313082

M. Sonja

**Sons:** 0/1

**Daughters:** 0/0

**M:** NL 101694584237

M. Gooitske

**Birth:** 03.04.09

**Cat.:** V

**MF:** NL 176409103027

Hircus Russel

**Sons:** 0/0

**Daughters:** 0/0

**MM:** NL 202244000740

AH GOOITSKE

1. 1186-5,30-62,9-3,60-42,7-105,6 305 D.

0/3 1284-4,80-61,6-3,65-46,9-108,5 305 D.

2. 1526-4,79-73,1-3,67-56-129-1 305 D.

0/3 1546-4,64-71,7-3,49-53,9-125,6

## LACTATIONS:

| number | lactation nr. | milking days | milk kg | fat % | fat kg | protein % | protein kg |
|--------|---------------|--------------|---------|-------|--------|-----------|------------|
| 37     | 1             | 236          | 778     | 3,8   | 29,9   | 3,3       | 25,8       |
| 23     | 2             | 236          | 853     | 3,8   | 32,7   | 3,4       | 28,8       |
| 12     | 3             | 234          | 976     | 3,8   | 37,0   | 3,4       | 33,3       |



**AT 383.256.140**

AFKKA ISOLDE

**Birth:** 31.07.14

Singleton

**TBV:** 105 (87) **FBV:** 101 (53) **MBV:** 106 (86)

**CC:** 107 **Pers:** 93 **BL:** 103 **RL:** 102

**BM-milk:** -7+0,63+4,7+0,18+1,0

2/2 789-4,14-32,7-3,38-26,7-59,4 240 D.

2 838-4,18-35,0-3,23-27,1-62,1 240 D.

**B: Karer Alexander, Jeging**



**AT 383.260.640**

AFFKKA INES

**Birth:** 07.08.14

Singleton

**TBV:** 109 (88) **FBV:** 110 (55) **MBV:** 107 (87)

**CC:** 116 **Pers:** 99 **BL:** 102 **RL:** 102

**BM-milk:** -11+0,53+3,9+0,34+2,2

3/3 788-3,87-30,1-3,57-27,8-57,9 240 D.

3 875-3,85-33,7-3,57-31,2-64,9 240 D.

**B: Karer Alexander, Jeging**

This son of Frost was bred by the well known breeder Meekma of Deinum. The sire's mother Sonja guarantees for high heredity security. Therefore Frost became one of the most utilized sons of Sido, ever. His dam Gooitske is the best known daughter of Russel and caused quite a stir with more than 105 kg fat/protein yield in her very first lactation. The dam-mother captivates by her fitness and lifetime performance. Farwest's daughters show the requested combination of milk yield and ingredients.





Example

## CHAMOIS COLOURED GOAT

highest veterinary standards | best performance | productive

# Hugo

AT 233.070.840

**TBV:** 101

**FBV:** 115

**MBV:** 93

Date of birth: 15.03.2015

twin

dehorned

Review: 18.03.2016

R:7 Fo:7 Fu:7 B:6

**BMC:** lb

Breeder: ZG Leitner, Oberperfuss

**F:** AT 234.140.540 Hero  
**Birth:** 15.02.14 Twin **Cat.:** A

03/15 R:8 Fo:8 Fu:7 B:6 **BMC:** lb

1xIB

**TBV:** 105 (84) **FBV:** 114 (59) **MBV:** 99 (75)

**BM-milk:** +2+0,00+0,0-0,06-0,5

**Sons:** 25/3 **Daughters:** 40/14

**M:** AT 860.560.930 Luzi  
**Birth:** 01.04.13 Twin **Cat.:** A

Buck-mother

03/15 R:7 Fo:8 Fu:7 E:8 **BMC:** la

**F:** 4.1/5/6/5 **UI:** 111

**AFB:** 390 **DBB:** 276 **TB%:** 60

1xG, 3xIA, 1xIB

**TBV:** 102 (88) **FBV:** 96 (55) **MBV:** 105 (87)

**BM-milk:** +13+0,24+2,4+0,15+1,7

5/3 859-3,84-33-3,24-27,8-60,8 239 D.

2. 948-4,04-38,3-3,12-29,6-67,9 240 D.

**FF:** AT 482.800.520 James  
04/14 R:8 Fo:7 Fu:8 B:8 Singleton la

**Sons:** 4/2 **Daughters:** 31/0

**FM:** AT 167.938.420 Jessy

03/14 R:8 Fo:7 Fu:7 E:8 Twin la

**TBV:** 105 2xG,5xIA **UI:** 92

**F:** 8.1/8/13/11 **AFB:** 399 **DBB:** 364 **TB%:** 75

8/8 785-3,25-25,5-3,20-25,1-50,6 236 D.

**MF:** AT 758.814.820 \* Ivo

03/12 R:6 Fo:7 Fu:6 B:7 Twin lb

**TBV:** 94 1xG,1xIB

**Sons:** 19/6 **Daughters:** 33/22

**MM:** AT 429.976.930 Luzia

04/13 R:7 Fo:7 Fu:7 E:6 D lb

2xIA **UI:** 132

**F:** 4.8/5/11/11 **AFB:** 406 **DBB:** 336 **TB%:** 80

5/4 1029-3,87-39,8-3,24-33,3-73,1 240 D.

# Cäsar

AT 233.445.240

**TBV:** 106

**FBV:** 92

**MBV:** 112

Date of birth 16.01.2014

twin

Review: 20.03.2015

R:7 Fo:6 Fu:7 B:7

**BMC:** lb

Breeder: Markus Wimber, Arzl

**F:** CH 1599471 \* Cerli  
**Birth:** 20.02.11 Twin **Cat.:** A

03/14 R:9 Fo:7 Fu:7 B:7 **BMC:** lb

1xIIA, 1xIIB

**TBV:** 98 (82) **FBV:** 87 (54) **MBV:** 103 (71)

**BM-milk:** +24+0,07+1,4+0,02+0,9

**Sons:** 28/10 **Daughters:** 24/11

**M:** AT 242.102.330 \* Rosana

**Birth:** 12.01.11 Triplet **Cat.:** A

Buck-mother

03/13 R:8 Fo:9 Fu:8 E:8 **BMC:** la

**F:** 6.0/6/11/11 **UI:** 116

**AFB:** 404 **DBB:** 355 **TB%:** 83

2xG, 1xE, 3xIA

**TBV:** 111 (90) **FBV:** 102 (62) **MBV:** 113 (89)

**BM-milk:** +77+0,25+4,8+0,18+3,8

6/5 864-3,85-33,3-3,22-27,8-61,1 240 D.

2. 865-3,91-33,8-3,69-31,9-65,7 240 D.

**FF:** CH 1345458 Sepp  
Singleton

**Sons:** 0/1 **Daughters:** 0/0

**FM:** CH 1221948 Palme

01/07 RM:6 T:6 G:6 E:6 Z:6

**UI:** 102

**F:** 3.8/4/5/5 **AFB:** 383 **DBB:** 337 **TB%:** 25

4/3 905-4,74-42,9-3,62-32,8-75,7 281 D.

**MF:** AT 15.697.270 Richard

03/06 R:7 Fo:7 Fu:7 B:7 Singleton lb

**TBV:** 108

1xG,1xIIB,3xIA,2xIB

**Sons:** 47/2 **Daughters:** 59/38

**MM:** AT162.669.720 Rulina

04/09 R:7 Fo:7 Fu:7 E:8 Triplet lb

**TBV:** 95 2xIA,2xIB **UI:** 132

**F:** 7.9/8/16/16 **AFB:** 387 **DBB:** 355 **TB%:** 50

8/8 721-3,69-26,6-3,02-21,8-48,4 240 D.

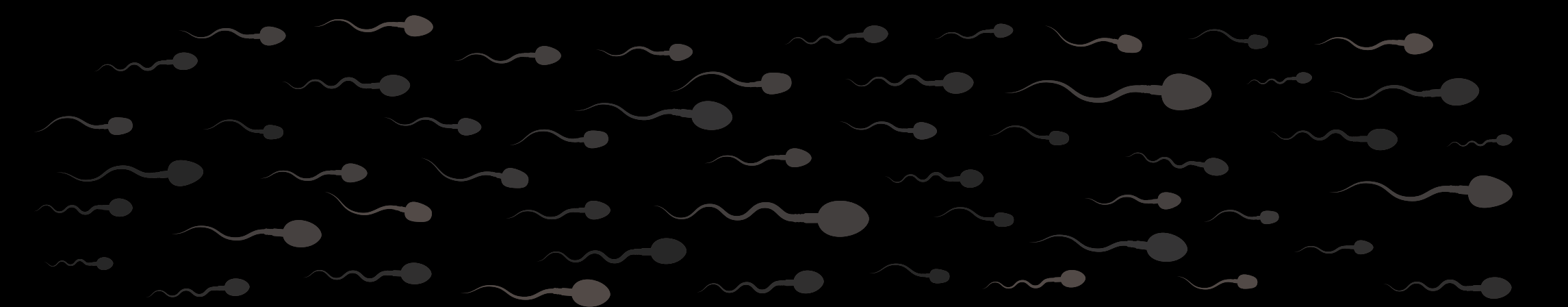
## LACTATIONS:

| number | lactation nr. | milking days | milk kg | fat % | fat kg | protein % | protein kg |
|--------|---------------|--------------|---------|-------|--------|-----------|------------|
| 15     | 1             | 234          | 590     | 3,4   | 20,2   | 3,0       | 17,9       |
| 5      | 2             | 240          | 734     | 3,5   | 26,1   | 3,0       | 22,1       |

## LACTATIONS:

| number | lactation nr. | milking days | milk kg | fat % | fat kg | protein % | protein kg |
|--------|---------------|--------------|---------|-------|--------|-----------|------------|
| 33     | 1             | 232          | 652     | 3,1   | 20,4   | 3,0       | 19,4       |
| 15     | 2             | 233          | 800     | 3,2   | 25,6   | 3,0       | 23,7       |





CONTACT NATIONAL:

CONTACT INTERNATIONAL:



Landesverband für Ziegenzucht- und haltung Oberösterreich  
Auf der Gugl 3 | A-4020 Linz / Donau  
Tel.: +4350 6902 - 1448 | Fax: +43 50 6902 - 91448  
office@ziegenland.com | [www.ziegenland.com](http://www.ziegenland.com)



genetic AUSTRIA GmbH  
Dr. Otmar Föger Straße 1 | A-4921 Hohenzell  
Tel +43-7752-82248-81 | Fax +43-7752-82248-5  
office@genetic-austria.at | [www.genetic-austria-at](http://www.genetic-austria-at)